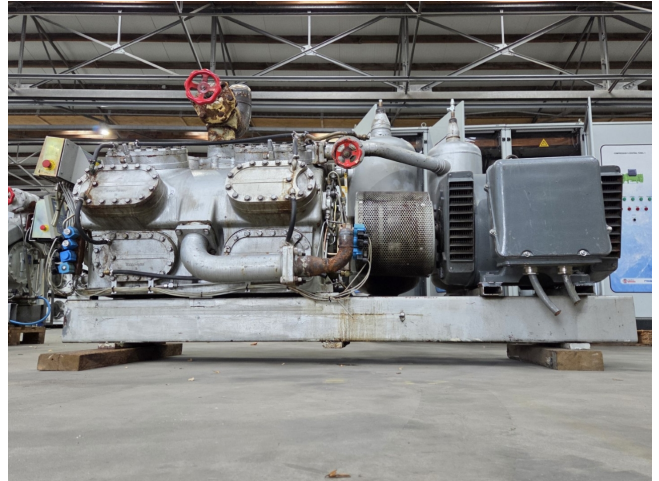


Sabroe TSMC 116 L

Specifications

Marka	Sabroe
Typ	TSMC 116 L
Czynnik chłodzący	NH 3 (ammonia)
kW at -30°C/+40°C	217,4
kW at -40°C/+40°C	128,6
Rozładunek	✓
Kontrolka wydajności	✓
Podstawa na stalowej ramie	✓
Separator oleju	✓
Okno widokowe	✓
Zawór elektromagnetyczny	✓
Panel kontrolny	✓
m ³ / h	820
Rozmiary	2720x1350x1520 mm (LxWxH)
Stock	2



Description

Used Sabroe TSMC 116 L

Used Sabroe TSMC 116 L R717 (Ammonia) reciprocating compressor on a steel base frame. Complete with an electric motor - 50 Hz - 110 kW - 1475 RPM, 2 oil separators and an Unisab 2 controller. The compressor has a displacement of 820 m³/h. *Why choose for HOSBV? We are not only the largest used refrigeration specialist in Europe, but also, we deliver all equipment including an extensive test, warranty and industrial cleaning. *If requested we are happy to arrange your logistics.

